
Ivan Allen College 1986-2001

**NORMATIVE DATA FOR THE C.I.O.S.
(COURSE / INSTRUCTOR OPINION SURVEY)**



Illustration of Stability of Norm Data for the Ivan Allen College 1986-2001

Class Size: Less than 16

Data	Item	N	Median	Cut1	Cut 2	Cut 3	Cut 4
42 Terms	24	1650	4.54	4.08	4.38	4.67	4.83
43 Terms	24	1663	4.54	4.09	4.38	4.67	4.83
42 Terms	C1	1650	4.36	4.01	4.24	4.47	4.67
43 Terms	C1	1663	4.37	4.02	4.24	4.47	4.66
42 Terms	C2	1650	4.54	4.19	4.43	4.62	4.80
43 Terms	C2	1663	4.54	4.20	4.43	4.62	4.80
42 Terms	C3	1650	4.29	4.00	4.18	4.39	4.64
43 Terms	C3	1663	4.29	4.00	4.18	4.39	4.64

Class Size: 16-35

Data	Item	N	Median	Cut1	Cut 2	Cut 3	Cut 4
42 Terms	24	4834	4.40	4.00	4.27	4.55	4.74
43 Terms	24	4966	4.40	4.00	4.27	4.54	4.74
42 Terms	C1	4834	4.24	3.94	4.15	4.32	4.52
43 Terms	C1	4966	4.24	3.94	4.15	4.33	4.52
42 Terms	C2	4834	4.41	4.10	4.32	4.49	4.67
43 Terms	C2	4966	4.42	4.11	4.32	4.49	4.68
42 Terms	C3	4834	4.20	3.95	4.12	4.27	4.49
43 Terms	C3	4966	4.20	3.95	4.12	4.27	4.49

Illustration of Stability of Norm Data for the Ivan Allen College 1986-2001

Class Size: 36-99

Data	Item	N	Median	Cut1	Cut 2	Cut 3	Cut 4
42 Terms	24	3532	4.27	3.89	4.15	4.38	4.65
43 Terms	24	3597	4.27	3.89	4.15	4.37	4.65
42 Terms	C1	3532	4.14	3.83	4.05	4.22	4.41
43 Terms	C1	3597	4.14	3.83	4.05	4.22	4.41
42 Terms	C2	3532	4.29	3.98	4.19	4.37	4.57
43 Terms	C2	3597	4.29	3.98	4.19	4.37	4.57
42 Terms	C3	3532	4.09	3.82	4.01	4.15	4.33
43 Terms	C3	3597	4.08	3.82	4.01	4.15	4.33

Class Size: Greater than 99

Data	Item	N	Median	Cut1	Cut 2	Cut 3	Cut 4
42 Terms	24	597	4.15	3.77	4.03	4.24	4.52
43 Terms	24	616	4.15	3.77	4.03	4.24	4.51
42 Terms	C1	597	4.08	3.73	3.97	4.17	4.36
43 Terms	C1	616	4.08	3.74	3.97	4.17	4.36
42 Terms	C2	597	4.08	3.74	4.00	4.13	4.36
43 Terms	C2	616	4.08	3.75	4.01	4.13	4.35
42 Terms	C3	597	4.03	3.76	3.97	4.08	4.23
43 Terms	C3	616	4.03	3.75	3.97	4.08	4.23

LEGEND

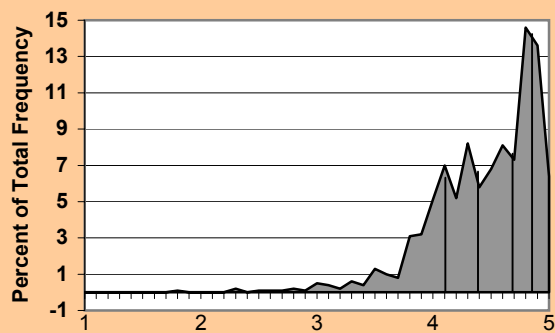
C1 is Preparation & Presentation = Items 10, 11, 13, 15, 18
 C2 is Interaction with Students = Items 14, 19, 20, 21, 22
 C3 is Assessment of Student Performance = Items 12, 16, 17, 23
 Item 24 = The instructor was an effective teacher.

Note: In the "Data" column, "Terms" refers to quarters for every term previous to Fall 1999 and to semesters for every term starting with Fall 1999.

Norm Data for the Ivan Allen College 1986-2001

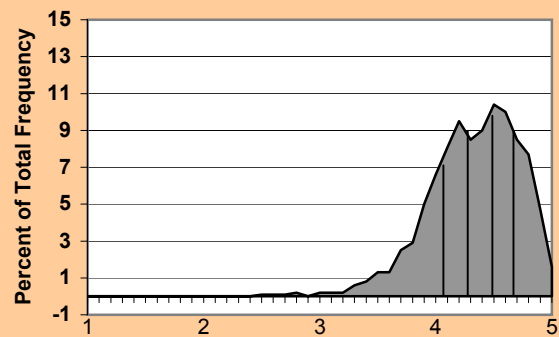
CLASS SIZE: LESS THAN 16

Instructor was an Effective Teacher



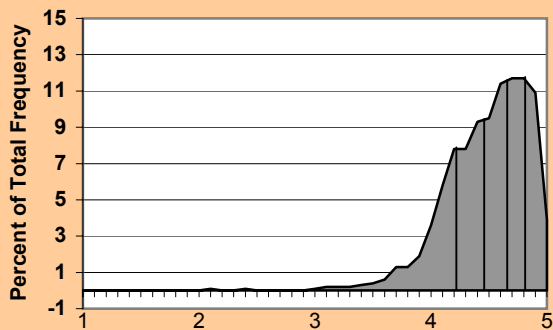
Median Score
N = 1663
Item 24

Preparation and Presentation of Course



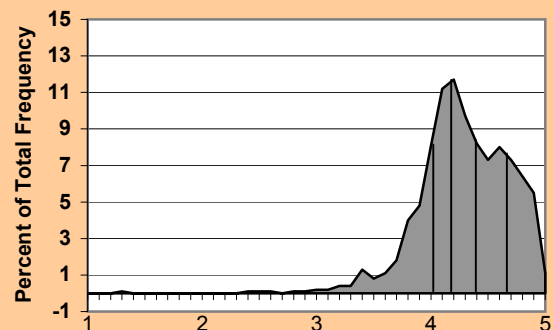
Mean Score
N = 1663
Cluster #1

Interaction With Students



Mean Score
N = 1663
Cluster #2

Assessment of Student Performance

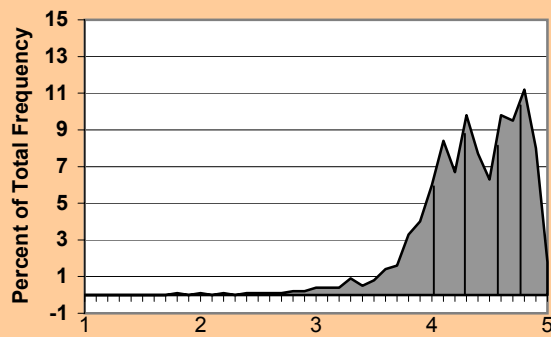


Mean Score
N = 1663
Cluster #3

Norm Data for the Ivan Allen College 1986-2001

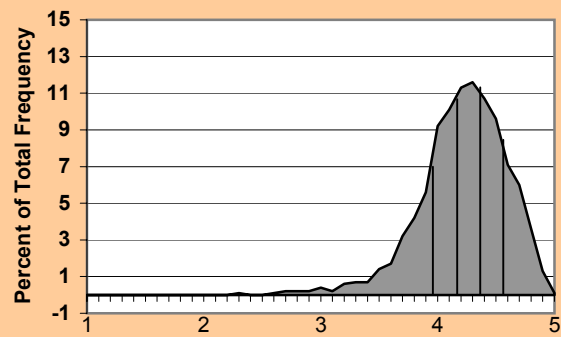
CLASS SIZE: 16 - 35

Instructor was an Effective Teacher



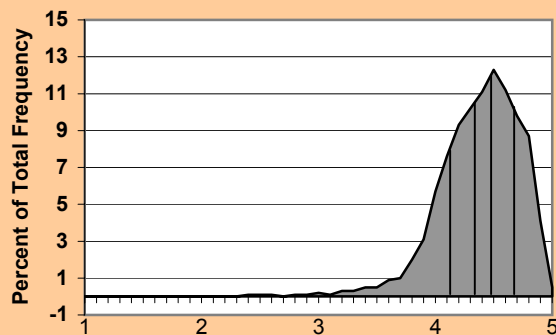
Median Score
N = 4966
Item 24

Preparation and Presentation of Course



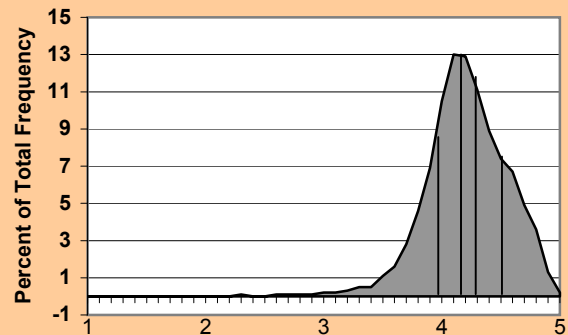
Mean Score
N = 4966
Cluster #1

Interaction With Students



Mean Score
N = 4966
Cluster #2

Assessment of Student Performance

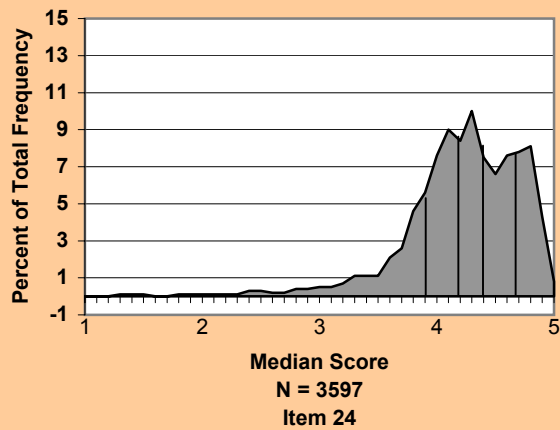


Mean Score
N = 4966
Cluster #3

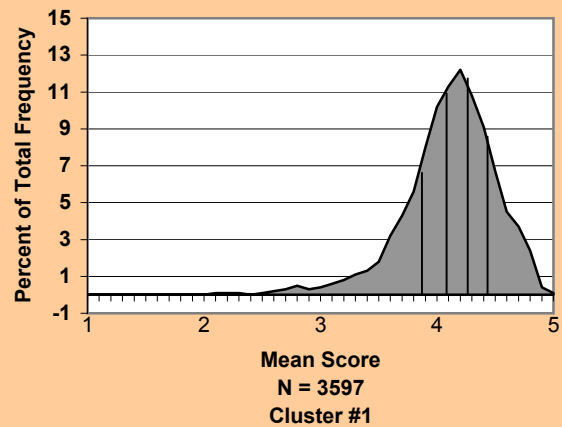
Norm Data for the Ivan Allen College 1986-2001

CLASS SIZE: 36 - 99

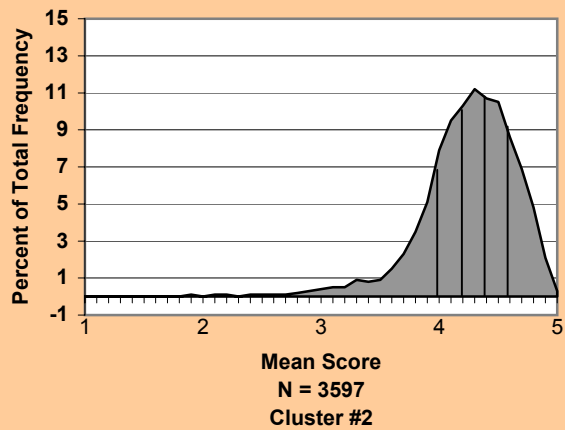
Instructor was an Effective Teacher



Preparation and Presentation of Course



Interaction With Students



Assessment of Student Performance

