
College of Management 1986-2001

**NORMATIVE DATA FOR THE C.I.O.S.
(COURSE / INSTRUCTOR OPINION SURVEY)**



Illustration of Stability of Norm Data for the College of Management 1986-2001

Class Size: Less than 16

Data	Item	N	Median	Cut1	Cut 2	Cut 3	Cut 4
42 Terms	24	19	4.27	3.78	4.09	4.47	4.77
43 Terms	24	24	4.42	3.93	4.17	4.55	4.84
42 Terms	C1	19	4.31	3.58	4.19	4.40	4.67
43 Terms	C1	24	4.32	3.91	4.24	4.48	4.66
42 Terms	C2	19	4.38	4.09	4.33	4.42	4.82
43 Terms	C2	24	4.44	4.12	4.37	4.55	4.85
42 Terms	C3	19	4.31	3.89	4.01	4.37	4.68
43 Terms	C3	24	4.33	3.93	4.14	4.41	4.73

Class Size: 16-35

Data	Item	N	Median	Cut1	Cut 2	Cut 3	Cut 4
42 Terms	24	86	4.36	3.97	4.25	4.51	4.74
43 Terms	24	106	4.40	4.01	4.29	4.53	4.72
42 Terms	C1	86	4.36	4.00	4.25	4.42	4.59
43 Terms	C1	106	4.37	4.02	4.28	4.43	4.59
42 Terms	C2	86	4.38	4.14	4.30	4.52	4.76
43 Terms	C2	106	4.46	4.15	4.34	4.57	4.77
42 Terms	C3	86	4.26	3.91	4.14	4.33	4.54
43 Terms	C3	106	4.26	3.96	4.15	4.35	4.55

Illustration of Stability of Norm Data for the College of Management 1986-2001

Class Size: 36-99

Data	Item	N	Median	Cut1	Cut 2	Cut 3	Cut 4
42 Terms	24	282	4.18	3.78	4.11	4.27	4.57
43 Terms	24	344	4.17	3.78	4.09	4.26	4.50
42 Terms	C1	282	4.12	3.72	4.03	4.20	4.42
43 Terms	C1	344	4.09	3.72	4.02	4.18	4.41
42 Terms	C2	282	4.29	4.00	4.18	4.37	4.57
43 Terms	C2	344	4.27	3.98	4.17	4.36	4.54
42 Terms	C3	282	4.08	3.65	3.95	4.15	4.34
43 Terms	C3	344	4.06	3.67	3.95	4.14	4.32

Class Size: Greater than 99

Data	Item	N	Median	Cut1	Cut 2	Cut 3	Cut 4
42 Terms	24	42	3.93	3.07	3.81	4.00	4.30
43 Terms	24	47	3.95	3.19	3.87	4.02	4.27
42 Terms	C1	42	3.82	3.13	3.73	3.96	4.21
43 Terms	C1	47	3.86	3.16	3.77	3.99	4.21
42 Terms	C2	42	3.94	3.24	3.73	4.05	4.26
43 Terms	C2	47	4.01	3.37	3.84	4.06	4.28
42 Terms	C3	42	3.85	3.31	3.70	3.96	4.24
43 Terms	C3	47	3.92	3.34	3.75	4.00	4.23

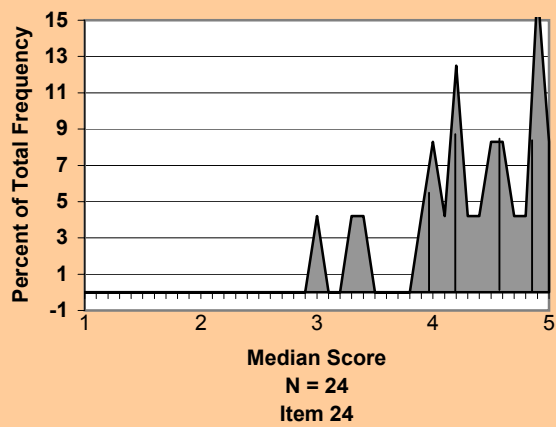
LEGEND

C1 is Preparation & Presentation = Items 10, 11, 13, 15, 18
 C2 is Interaction with Students = Items 14, 19, 20, 21, 22
 C3 is Assessment of Student Performance = Items 12, 16, 17, 23
 Item 24 = The instructor was an effective teacher.

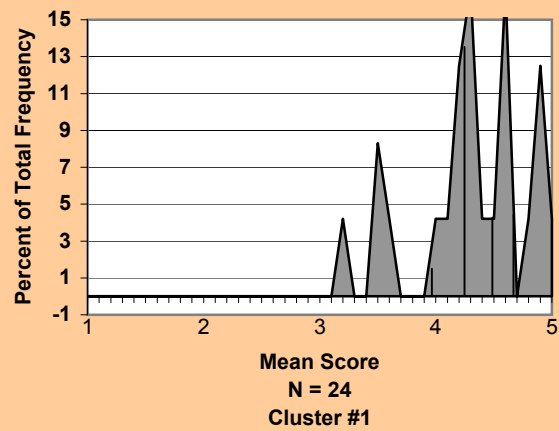
Note: In the "Data" column, "Terms" refers to quarters for every term previous to Fall 1999 and to semesters for every term starting with Fall 1999.

CLASS SIZE: LESS THAN 16

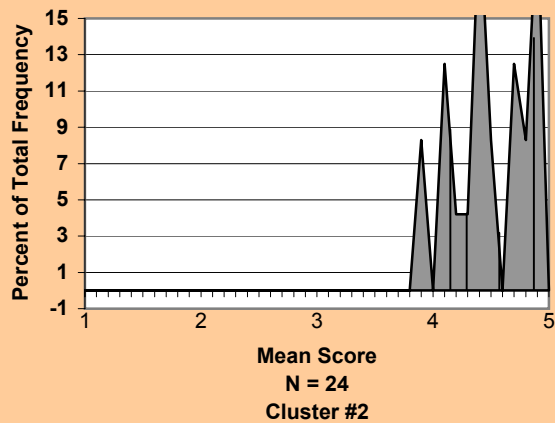
Instructor was an Effective Teacher



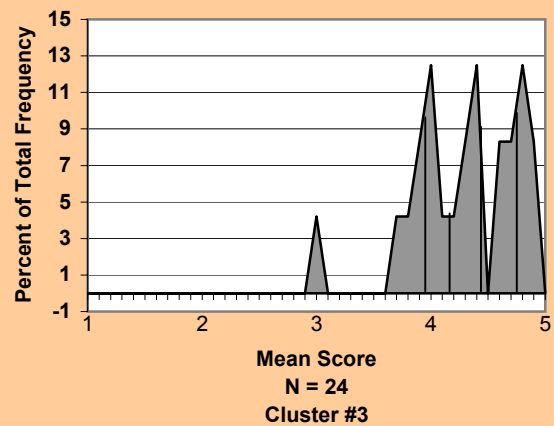
Preparation and Presentation of Course



Interaction With Students



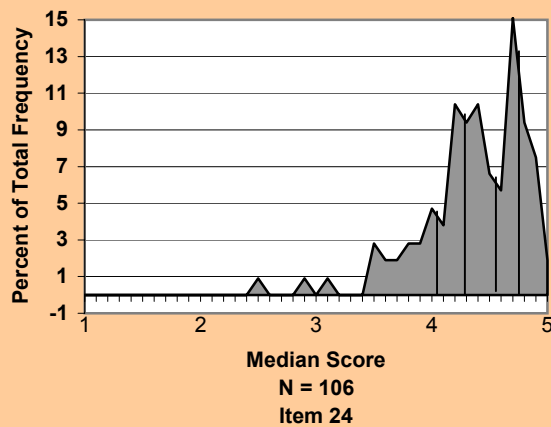
Assessment of Student Performance



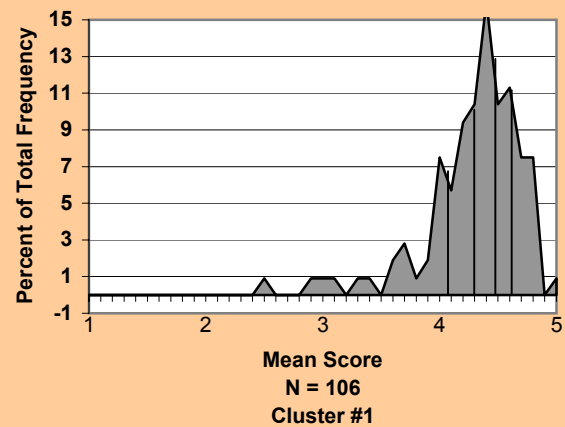
Norm Data for the College of Management 1986-2001

CLASS SIZE: 16 - 35

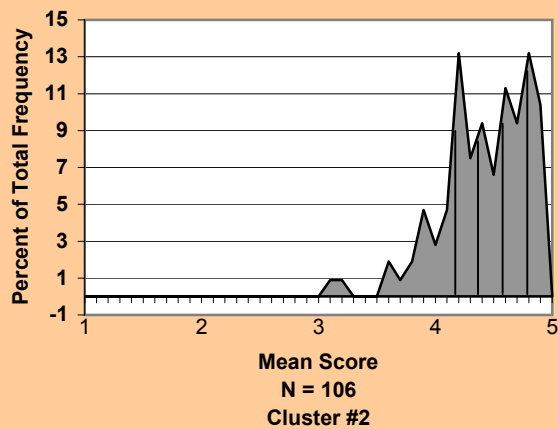
Instructor was an Effective Teacher



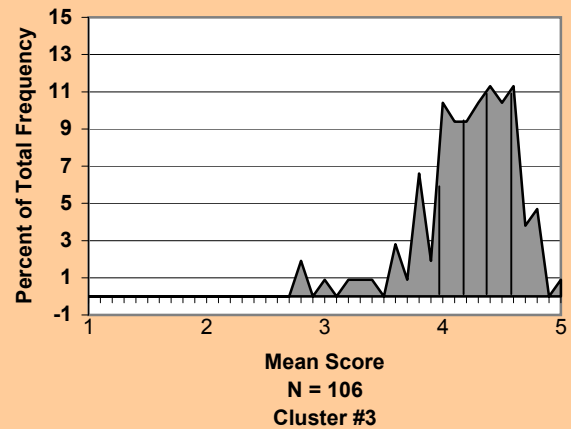
Preparation and Presentation of Course



Interaction With Students



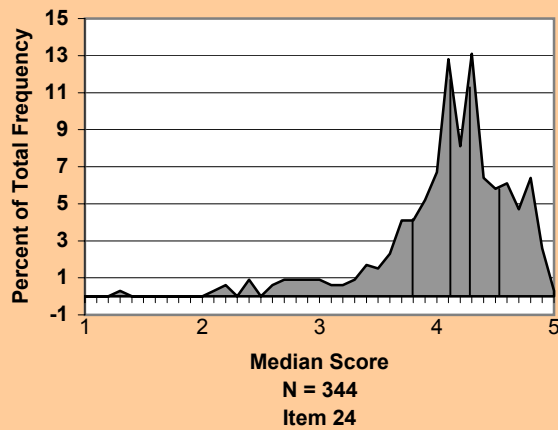
Assessment of Student Performance



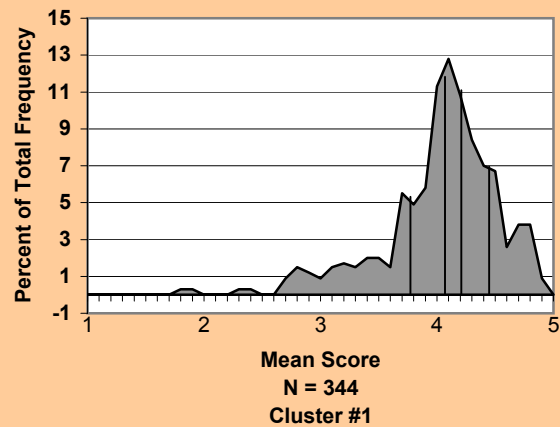
Norm Data for the College of Management 1986-2001

CLASS SIZE: 36 - 99

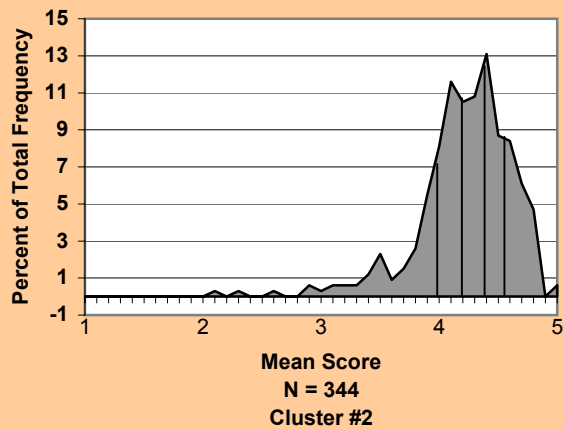
Instructor was an Effective Teacher



Preparation and Presentation of Course



Interaction With Students



Assessment of Student Performance

